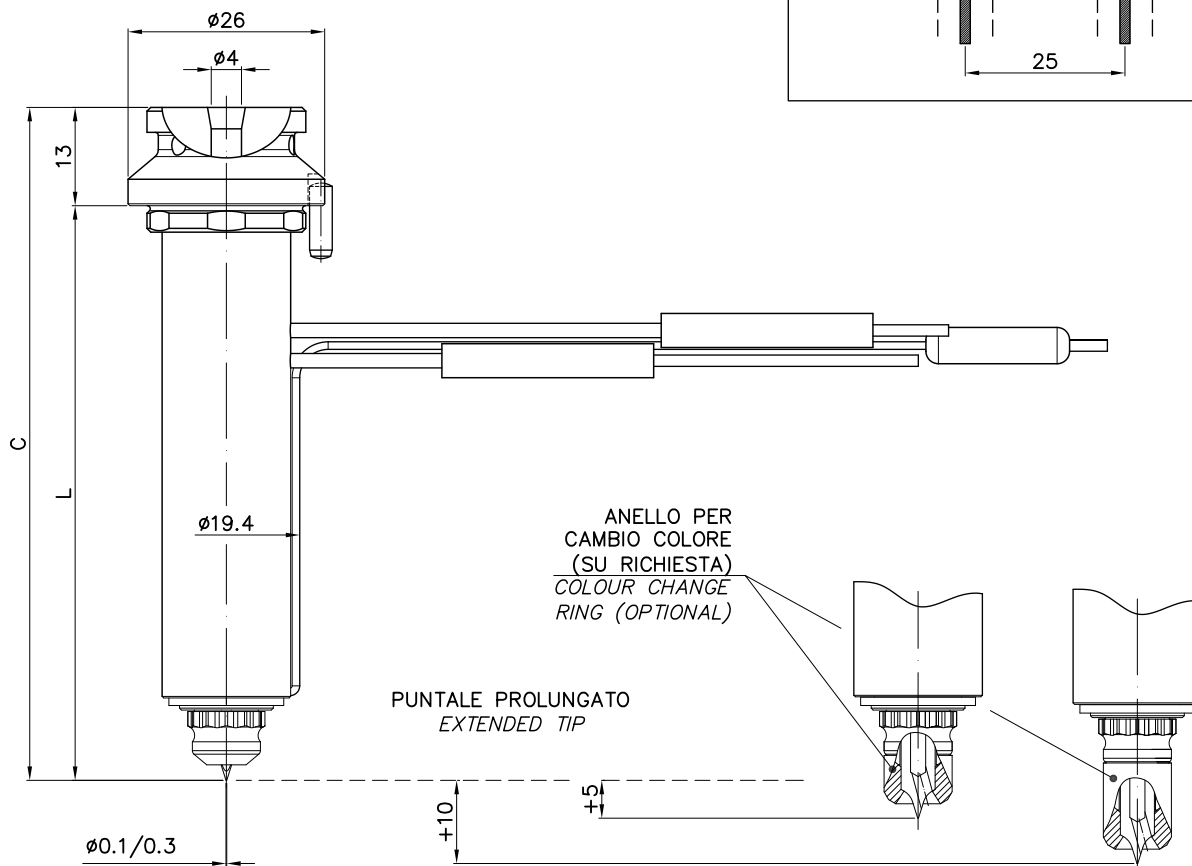
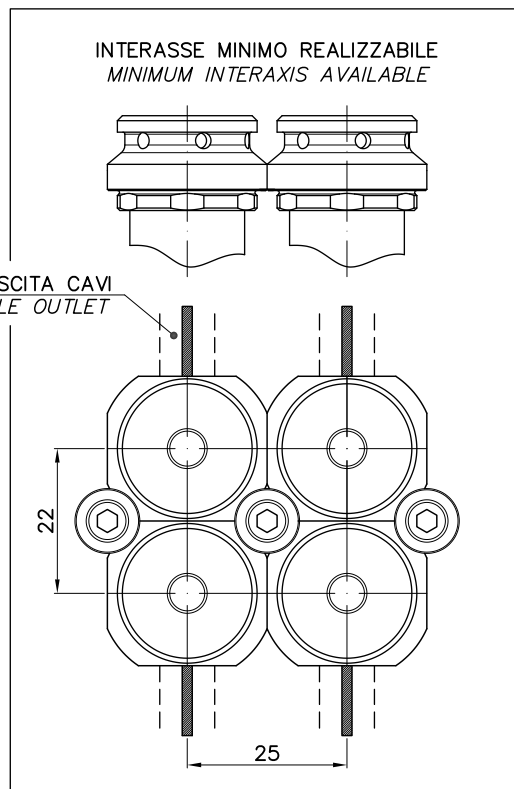
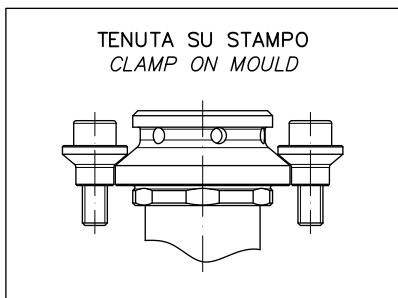
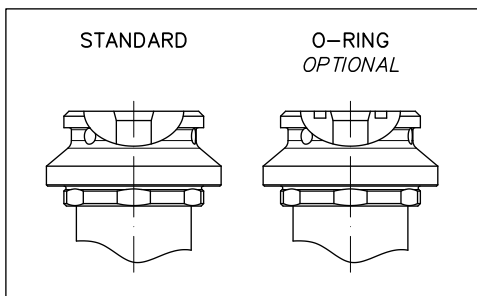


CODICE UGELLO Nozzle code	L ±0.01	C
2PKX05066	65.82*	78.82*
2PKX05086	85.76*	98.76*
2PKX05106	105.70*	118.70*
2PKX05136	135.62*	148.62*
2PKX05156	155.56	168.56
2PKX05176	175.51	188.51
2PKX05206	205.42	218.42

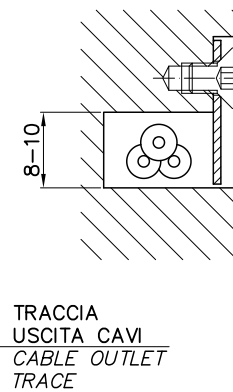
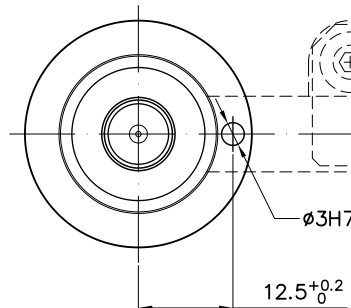
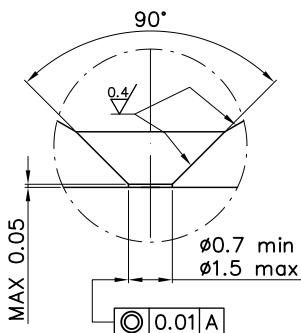
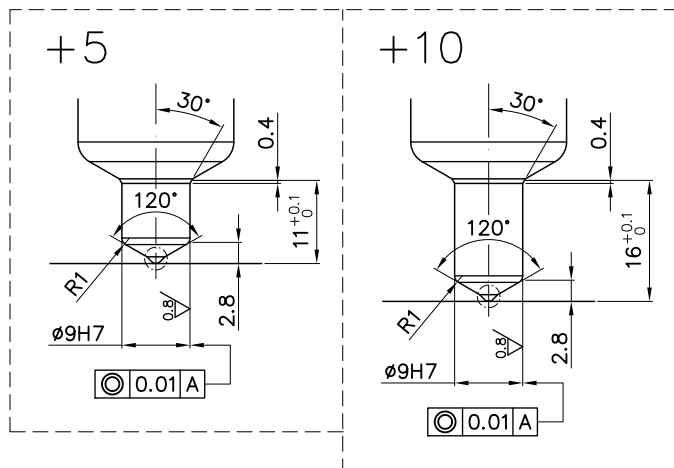
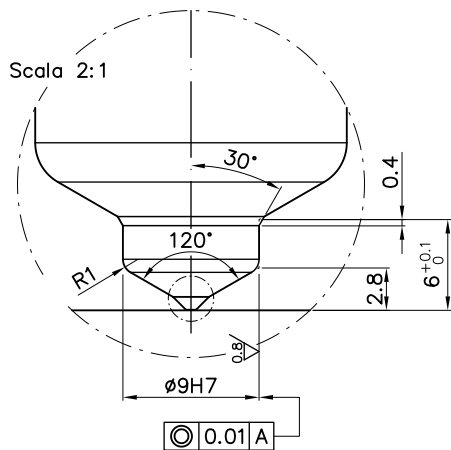
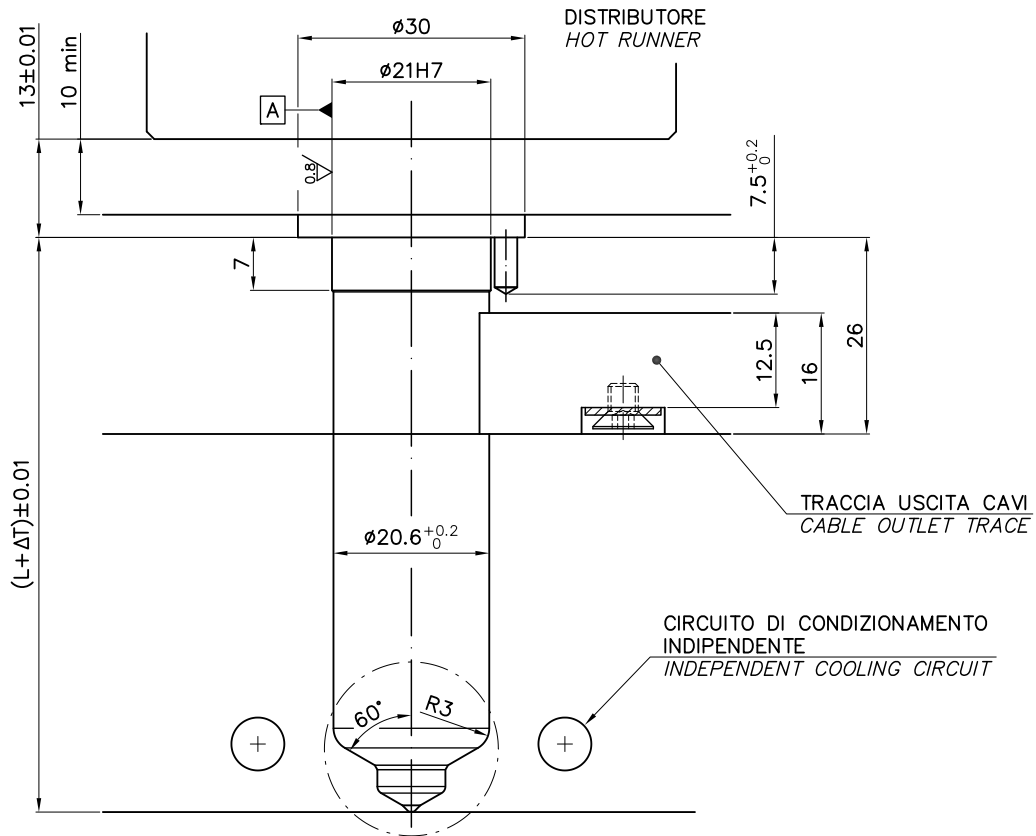
* LUNGHEZZA DISPONIBILE A MAGAZZINO
* IN STOCK LENGTH

$\Delta T =$ ALLUNGAMENTO TERMICO
Heat extension

L ±0.01	175°	200°	225°	250°	300°
65.82*	0.16	0.18	0.21	0.23	0.28
85.76*	0.21	0.24	0.27	0.30	0.36
105.70*	0.26	0.30	0.33	0.37	0.44
135.62*	0.33	0.38	0.43	0.48	0.57
155.56	0.38	0.44	0.49	0.55	0.65
175.51	0.43	0.49	0.55	0.62	0.74
205.42	0.50	0.58	0.65	0.72	0.86



Rev. 00

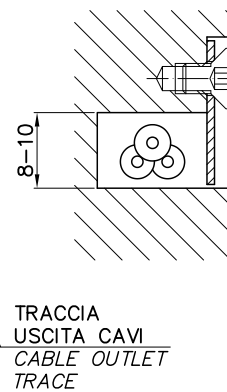
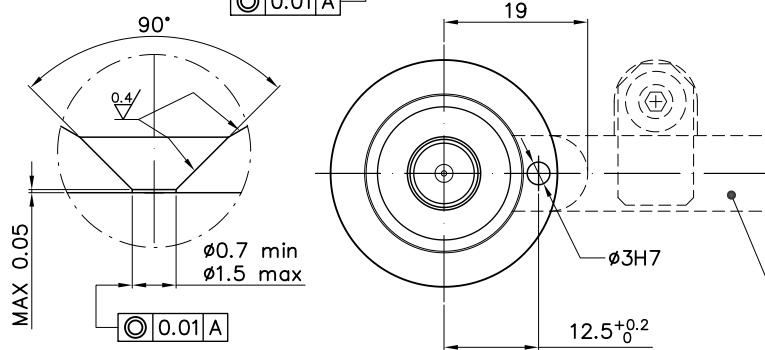
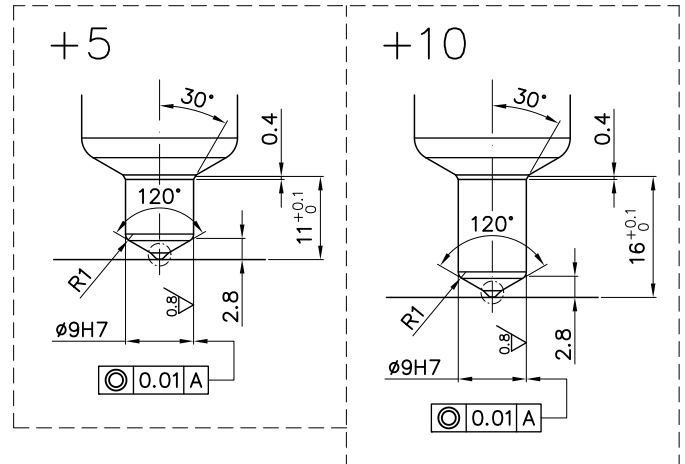
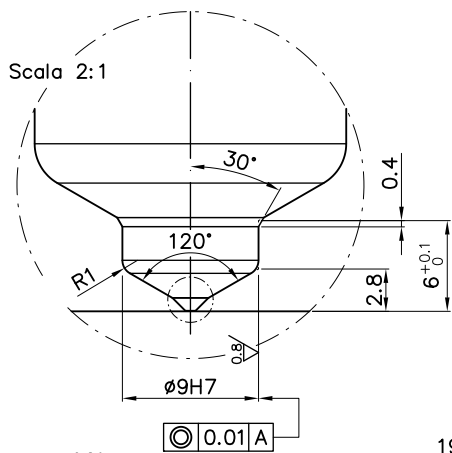
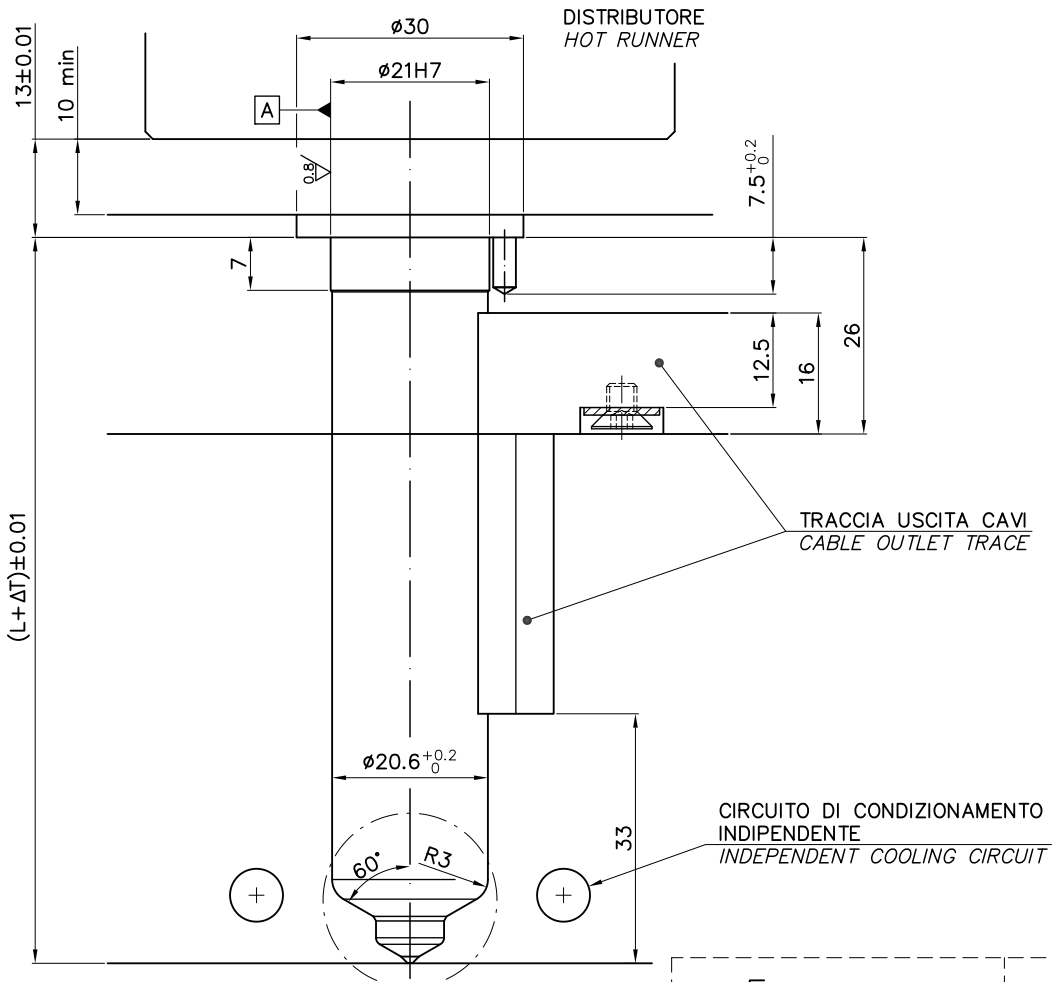



Il valore del foro di iniezione è INDICATIVO e dipende dal ϕ del puntale iniettore adottato e da innumerevoli altri fattori. Per chiarimenti contattare il nostro Ufficio Tecnico.

The size of the injection hole is INDICATIVE and depends on ϕ of the nozzle tip utilized; and many others factors. For clarification contact our technical office.



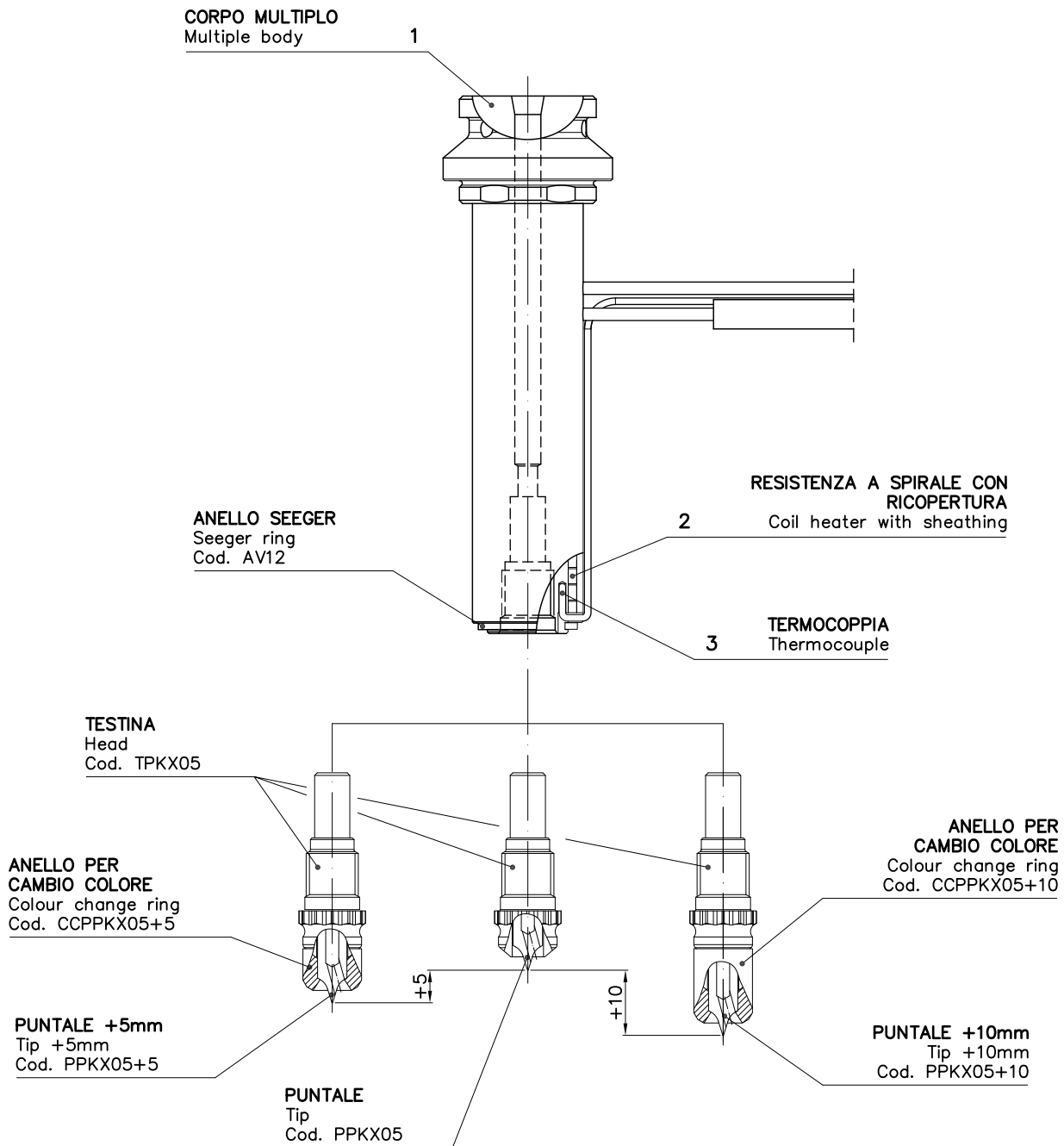
ATTENZIONE
VISTA DAL LATO UGELLO MACCHINA
ATTENTION
VIEW FROM SIDE OF MACHINE



 Il valore del foro di iniezione è INDICATIVO e dipende dal ϕ del puntale iniettore adottato e da innumerevoli altri fattori. Per chiarimenti contattare il nostro Ufficio Tecnico.

The size of the injection hole is INDICATIVE and depends on ϕ of the nozzle tip utilized; and many others factors. For clarification contact our technical office.

 ATTENZIONE
VISTA DAL LATO UGELLO MACCHINA
ATTENTION
VIEW FROM SIDE OF MACHINE

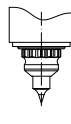
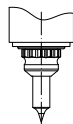
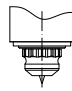


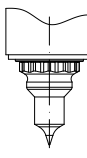
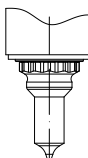
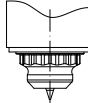
CODICE INIETTORE Nozzle code	1 CORPO MULTIPOLO Multiple body	2 RESISTENZA A SPIRALE CON RICOPERTURA Coil heater with sheathing	3 TERMOCOPPIA Thermocouple
2PKX05066*	C2PKX05069	RSTC2PKX05069	14TE010150
2PKX05086*	C2PKX05089	RSTC2PKX05089	14TE010150
2PKX05106*	C2PKX05109	RSTC2PKX05109	14TE010200
2PKX05136*	C2PKX05139	RSTC2PKX05139	14TE010200
2PKX05156	C2PKX05159		14TE010250
2PKX05176	C2PKX05179		14TE010250
2PKX05206	C2PKX05209		14TE010300


* LUNGHEZZA DISPONIBILE A MAGAZZINO


* IN STOCK LENGTH


MAX PESI STAMPABILI [g]
IN FUNZIONE DEL SIZE DELL'INIETTORE E DEL TIPO DI POLIMERO
PRINTABLE MAXIMUM WEIGHT [g]
IN RELATION TO NOZZLE SIZE AND POLYMER TYPE

		PKX05		
		PKX05	PKX05+05	PKX05+10
BASSO VALORE DI VISCOSITA' MFR >100 [g/10min.]	PELD – PP – PBT SB – PEHD – PS HIPS	15		
MEDIO VALORE DI VISCOSITA' MFR 30>100 [g/10min.]	CA – ABS – SAN POM – PA66 – PA6 PPO – PA610 – ASA PETP – PVC	5		
peso max del particolare da stampare in grammi [g] <i>maximum weight in grams of item to be moulded [g]</i>				

		PKX10		
		PKX10	PKX10+10	PKX10+15
BASSO VALORE DI VISCOSITA' MFR >100 [g/10min.]	PELD – PP – PBT SB – PEHD – PS HIPS	80		
MEDIO VALORE DI VISCOSITA' MFR 30>100 [g/10min.]	CA – ABS – SAN POM – PA66 – PA6 PPO – PA610 – ASA PETP – PVC	60		
peso max del particolare da stampare in grammi [g] <i>maximum weight in grams of item to be moulded [g]</i>				

 La classificazione dei materiali polimerici in relazione ai valori dell'MFR (Melt Flow Rate) è puramente INDICATIVA considerando le innumerevoli variabili che influenzano tale valore. Si prega di contattare il nostro Ufficio Tecnico per chiarimenti.
Considering the numerous variables that influence the MFR (Melt Flow Rate) value, the classification of the polymer material value is purely INDICATIVE. Therefore do please contact our Technical Office for clarifications.

 Il peso massimo della stampata espressa in grammi [g] riportato in tabella è puramente INDICATIVO. Tale valore dipende da molteplici fattori tra i quali la geometria del particolare da stampare, dal øf del puntale iniettore, il ød del foro di ecc. Per chiarimenti contattare il nostro Ufficio Tecnico.
The maximum weight of the item, expressed in grams (g), as shown in the table is purely INDICATIVE. Such a value depends on multiple factors which include the geometry of the item to be moulded, the diameter of nozzle tip, size of injection hole, etc. Therefore do please contact our Technical Office for clarifications.

 E-mail: tecnico@asso.it

Rev. 00