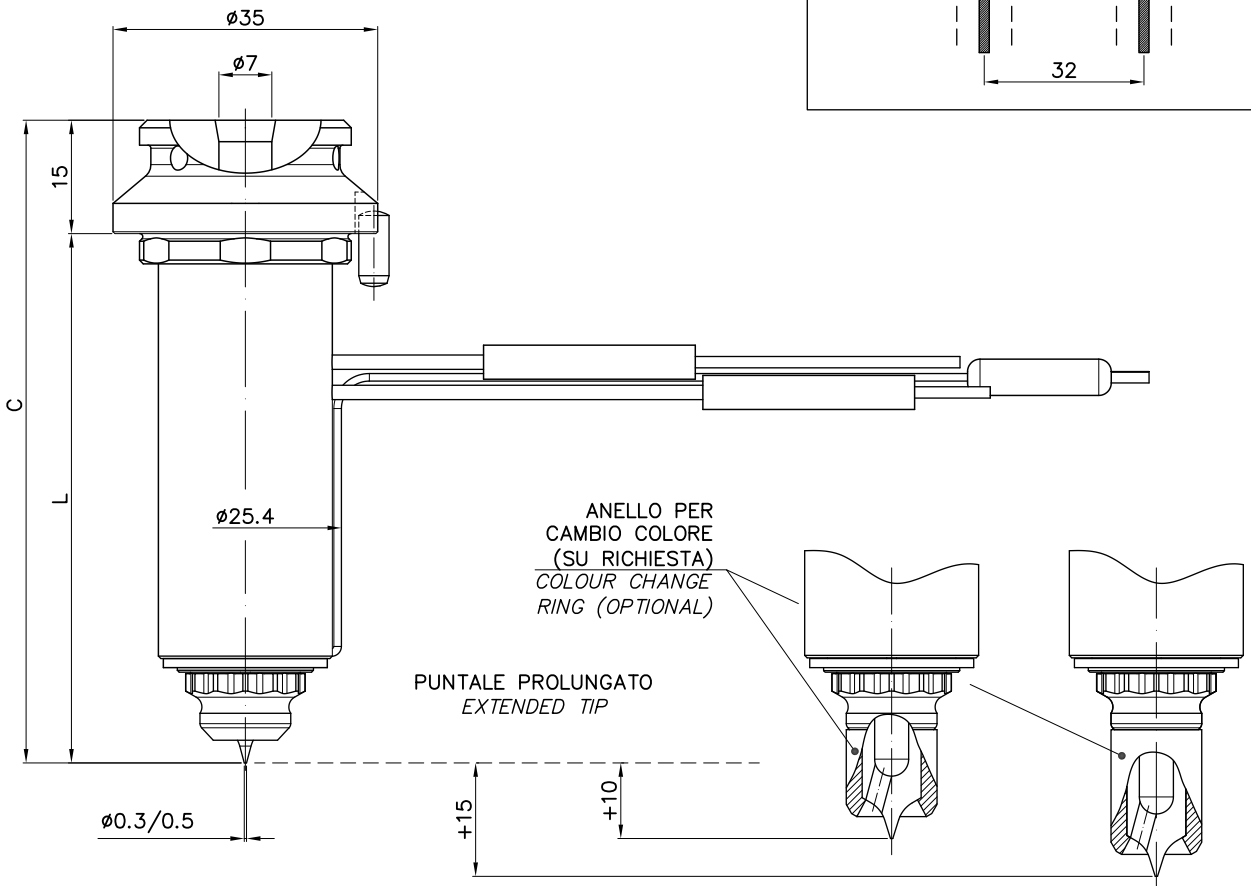
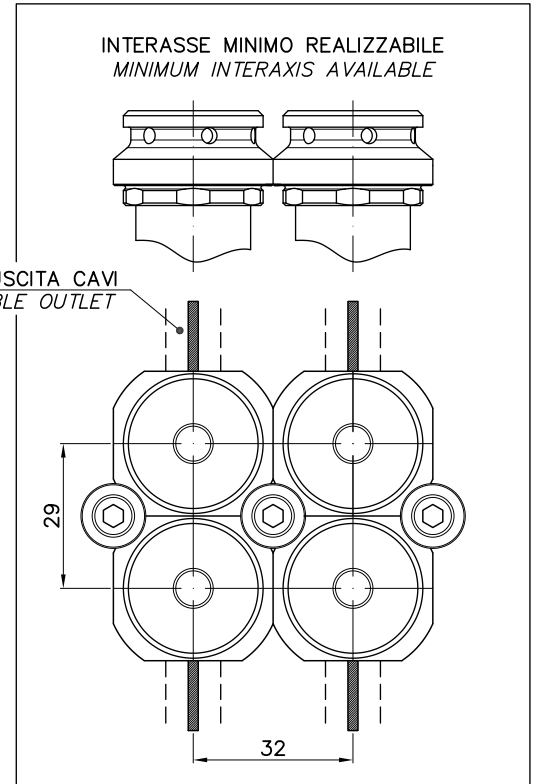
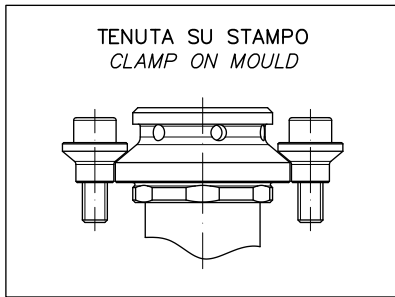
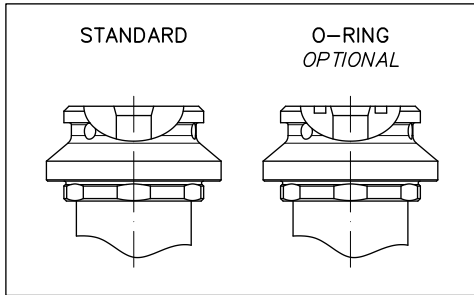


CODICE UGELLO Nozzle code	L ±0.01	C
2PKX10066	65.82*	80.82*
2PKX10086	85.76*	100.76*
2PKX10106	105.70*	120.70*
2PKX10136	135.62*	150.62*
2PKX10156	155.56	170.56
2PKX10176	175.51	190.51
2PKX10206	205.42	220.42

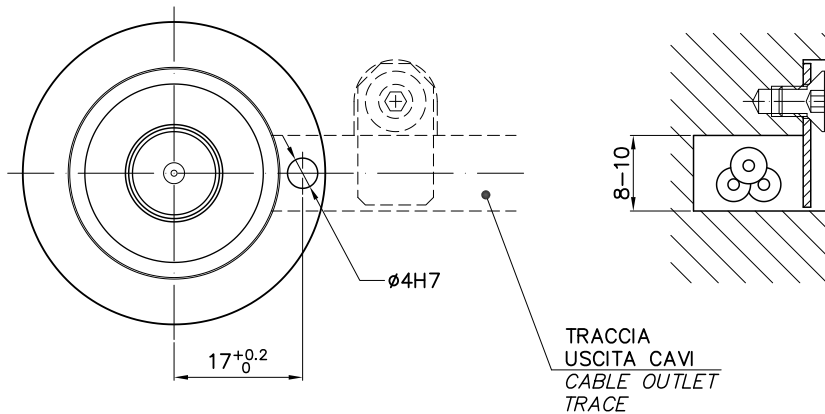
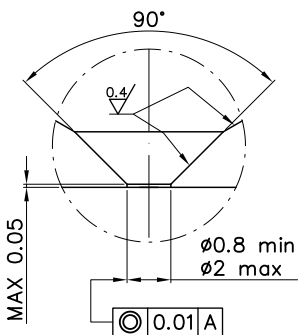
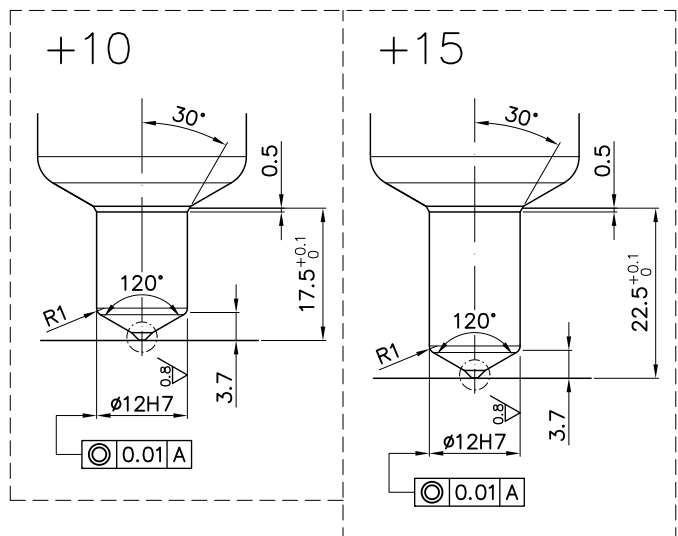
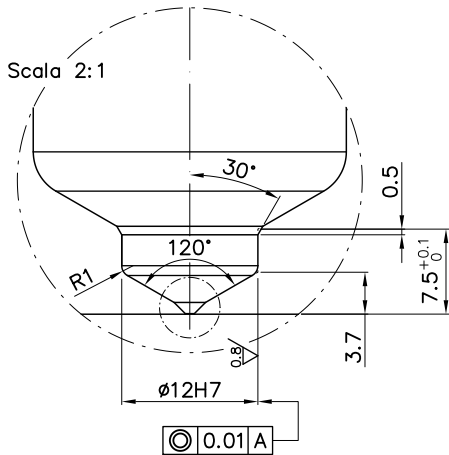
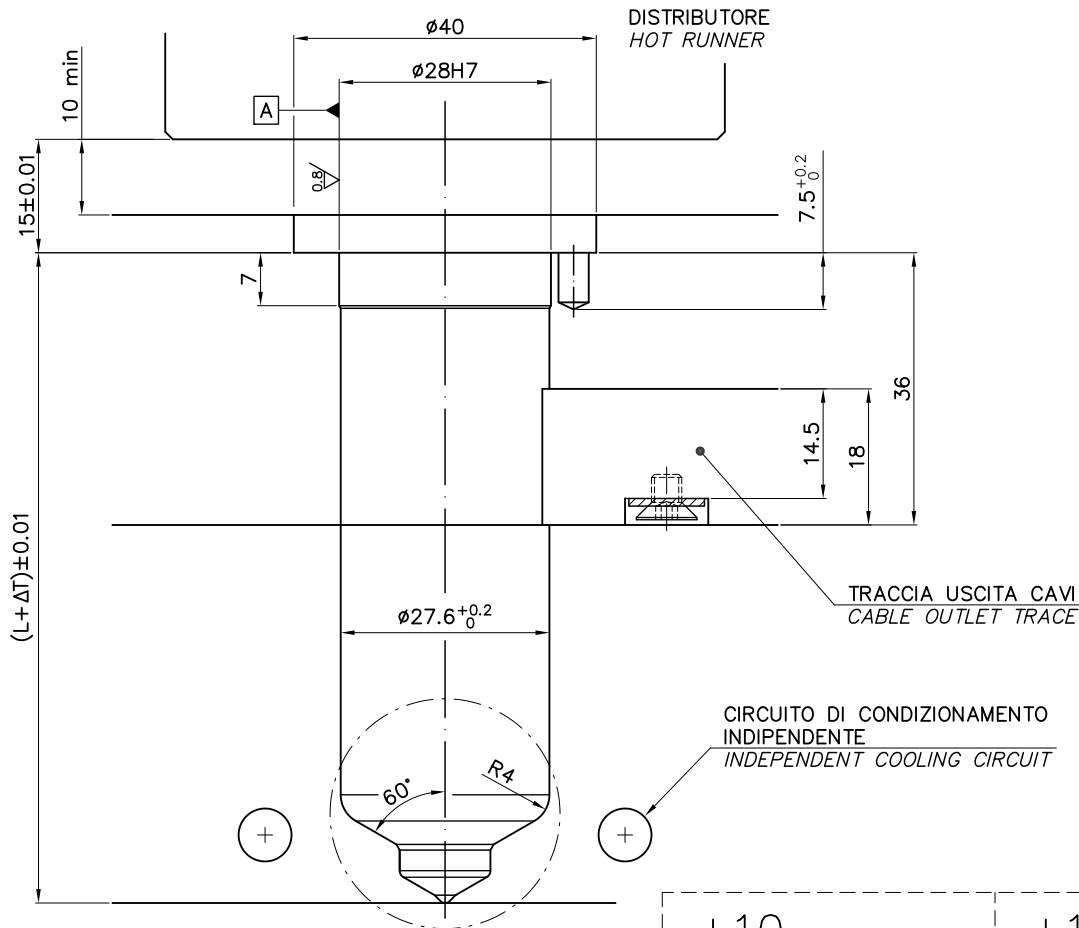
\* LUNGHEZZA DISPONIBILE A MAGAZZINO  
\* IN STOCK LENGTH

$\Delta T$  = ALLUNGAMENTO TERMICO  
Heat extension

L ±0.01	175°	200°	225°	250°	300°
65.82*	0.16	0.18	0.21	0.23	0.28
85.76*	0.21	0.24	0.27	0.30	0.36
105.70*	0.26	0.30	0.33	0.37	0.44
135.62*	0.33	0.38	0.43	0.48	0.57
155.56	0.38	0.44	0.49	0.55	0.65
175.51	0.43	0.49	0.55	0.62	0.74
205.42	0.50	0.58	0.65	0.72	0.86



Rev. 00

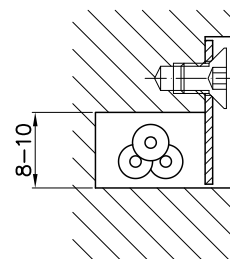
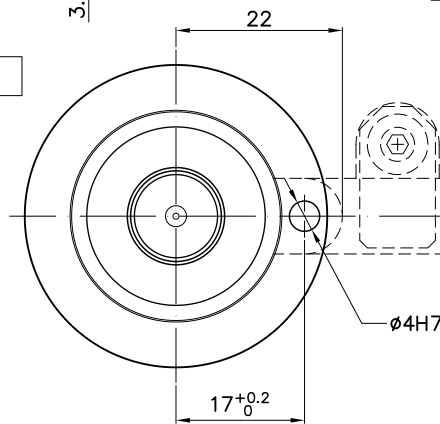
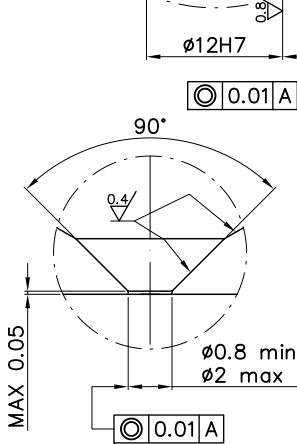
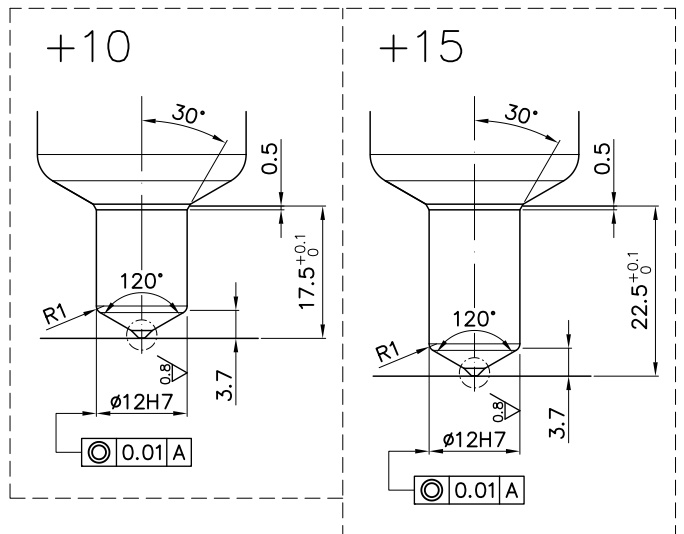
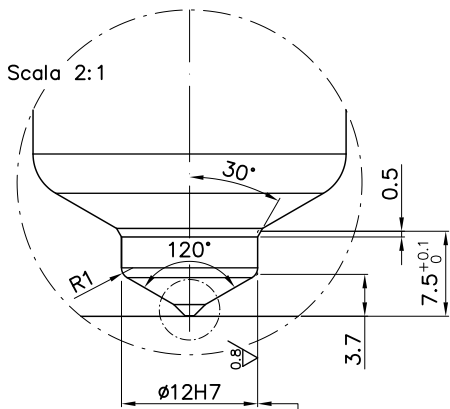
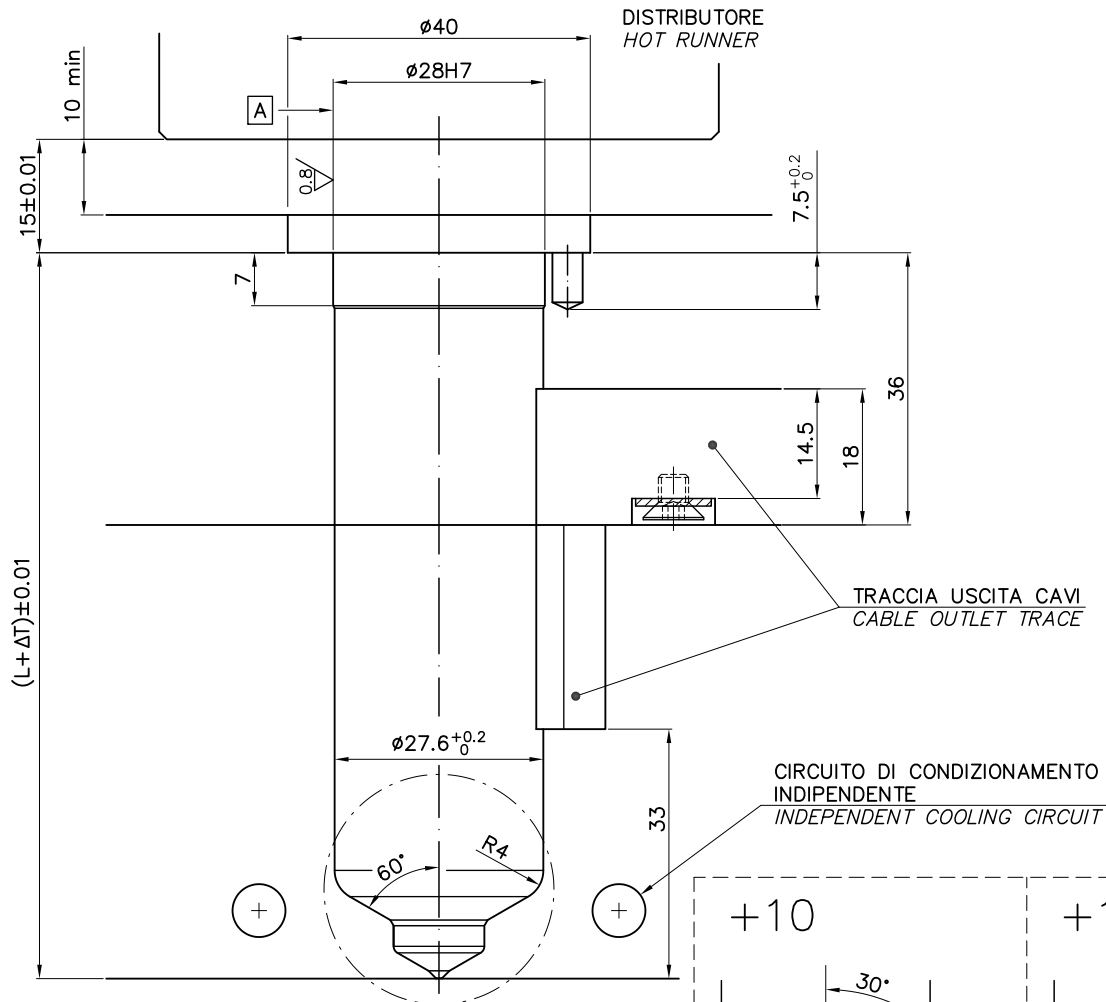


Il valore del foro di iniezione è INDICATIVO e dipende dal  $\phi$  del puntale iniettore adottato e da innumerevoli altri fattori. Per chiarimenti contattare il nostro Ufficio Tecnico.


The size of the injection hole is INDICATIVE and depends on  $\phi$  of the nozzle tip utilized; and many others factors. For clarification contact our technical office.



ATTENZIONE  
VISTA DAL LATO UGELLO MACCHINA  
ATTENTION  
VIEW FROM SIDE OF MACHINE

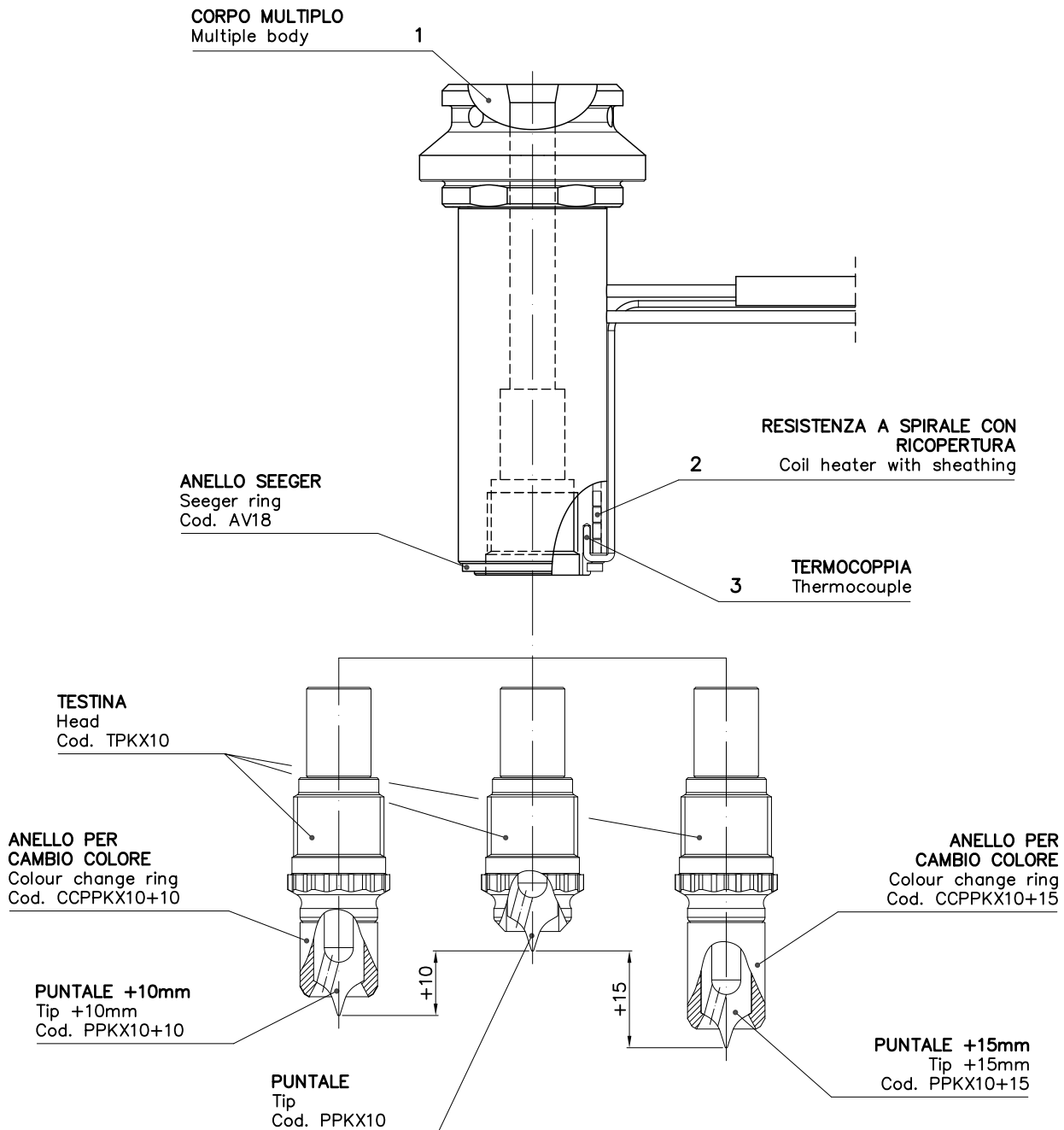


TRACCIA USCITA CAVI  
CABLE OUTLET TRACE

 Il valore del foro di iniezione è INDICATIVO e dipende dal  $\phi$  del puntale iniettore adottato e da innumerevoli altri fattori. Per chiarimenti contattare il nostro Ufficio Tecnico.  
The size of the injection hole is INDICATIVE and depends on  $\phi$  of the nozzle tip utilized; and many others factors. For clarification contact our technical office.

 ATTENZIONE  
VISTA DAL LATO UGELLO MACCHINA  
ATTENTION  
VIEW FROM SIDE OF MACHINE

Rev. 00

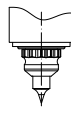
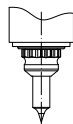
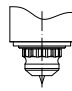


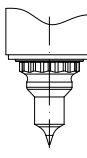
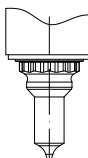
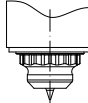
CODICE INIETTORE Nozzle code	1 CORPO MULTIPLIO Multiple body	2 RESISTENZA A SPIRALE CON RICOPERTURA Coil heater with sheathing	3 TERMOCOPPIA Thermocouple
2PKX10066*	C2PKX10069	RSTC2PKX10069	14TE010150
2PKX10086*	C2PKX10089	RSTC2PKX10089	14TE010200
2PKX10106*	C2PKX10109	RSTC2PKX10109	14TE010200
2PKX10136*	C2PKX10139	RSTC2PKX10139	14TE010250
2PKX10156	C2PKX10159		14TE010250
2PKX10176	C2PKX10179		14TE010250
2PKX10206	C2PKX10209		14TE010300


\* LUNGHEZZA DISPONIBILE A MAGAZZINO


\* IN STOCK LENGTH


**MAX PESI STAMPABILI [g]**  
**IN FUNZIONE DEL SIZE DELL'INIETTORE E DEL TIPO DI POLIMERO**  
*PRINTABLE MAXIMUM WEIGHT [g]*  
*IN RELATION TO NOZZLE SIZE AND POLYMER TYPE*

		PKX05		
		PKX05	PKX05+05	PKX05+10
<b>BASSO VALORE</b> DI VISCOSITA' MFR >100 [g/10min.]	PELD – PP – PBT SB – PEHD – PS HIPS	15		
<b>MEDIO VALORE</b> DI VISCOSITA' MFR 30>100 [g/10min.]	CA – ABS – SAN POM – PA66 – PA6 PPO – PA610 – ASA PETP – PVC	5		
peso max del particolare da stampare in grammi [g] <i>maximum weight in grams of item to be moulded [g]</i>				

		PKX10		
		PKX10	PKX10+10	PKX10+15
<b>BASSO VALORE</b> DI VISCOSITA' MFR >100 [g/10min.]	PELD – PP – PBT SB – PEHD – PS HIPS	80		
<b>MEDIO VALORE</b> DI VISCOSITA' MFR 30>100 [g/10min.]	CA – ABS – SAN POM – PA66 – PA6 PPO – PA610 – ASA PETP – PVC	60		
peso max del particolare da stampare in grammi [g] <i>maximum weight in grams of item to be moulded [g]</i>				

 La classificazione dei materiali polimerici in relazione ai valori dell'MFR (Melt Flow Rate) è puramente INDICATIVA considerando le innumerevoli variabili che influenzano tale valore. Si prega di contattare il nostro Ufficio Tecnico per chiarimenti.  
*Considering the numerous variables that influence the MFR (Melt Flow Rate) value, the classification of the polymer material value is purely INDICATIVE. Therefore do please contact our Technical Office for clarifications.*

 Il peso massimo della stampata espressa in grammi [g] riportato in tabella è puramente INDICATIVO. Tale valore dipende da molteplici fattori tra i quali la geometria del particolare da stampare, dal øf del puntale iniettore, il ød del foro di ecc. Per chiarimenti contattare il nostro Ufficio Tecnico.  
*The maximum weight of the item, expressed in grams (g), as shown in the table is purely INDICATIVE. Such a value depends on multiple factors which include the geometry of the item to be moulded, the diameter of nozzle tip, size of injection hole, etc. Therefore do please contact our Technical Office for clarifications.*

 E-mail: [tecnico@asso.it](mailto:tecnico@asso.it)

Rev. 00