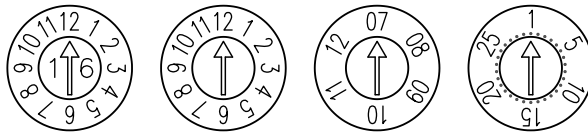
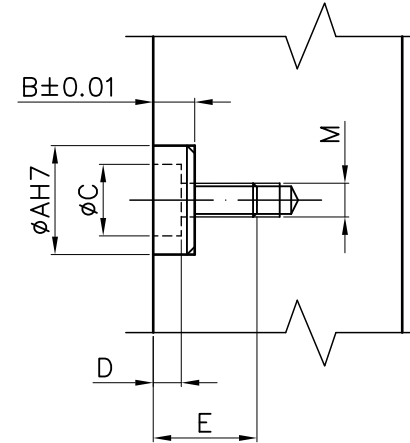
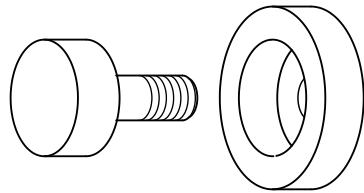


Datari per stampi ad iniezione e pressofusione, costruiti in acciaio 1.2083 rettificati e temperati 48/50 HRC

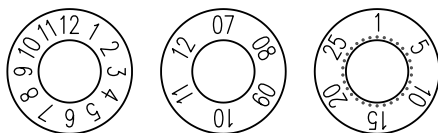
Date stamps for injection and die-casting moulds, They are completely made in ground and hardened 1.2083 steel with 48/50 HRC



Corpo		Inserito			
φA	B	φC	D	E	M
φ8	4	4	3	8	3
φ10	4	5	3	8	3
φ16	4	9	3	8	3
φ25	8	13	6	12	3

DATARIO			Date stamp	
φ8	FDBMA08	FDBMF08	FDBAF08	
φ10	FDBMA10	FDBMF10	FDBAF10	FDBG10
φ16	FDBMA16	FDBMF16	FDBAF16	FDBG16
φ25	FDBMA25	FDBMF25	FDBAF25	FDBG25

φA	B	C	φD
φ8	4	8	4
φ10	4	8	5
φ16	4	8	9
φ25	8	12	13



CORPO		Body	
φ8	RCBM08	RCBA08	
φ10	RCBM10	RCBA10	RCBG10
φ16	RCBM16	RCBA16	RCBG16
φ25	RCBM25	RCBA25	RCBG25

INSERTO		Insert	
φ8	RIBA08	RIBF08	
φ10	RIBA10	RIBF10	
φ16	RIBA16	RIBF16	
φ25	RIBA25	RIBF25	

Su ordinazione possono essere forniti datari neutri non temperati e versioni speciali
Neutral untempered date stamps and on request special versions can be supplied