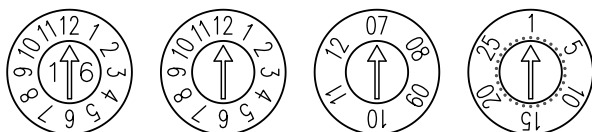
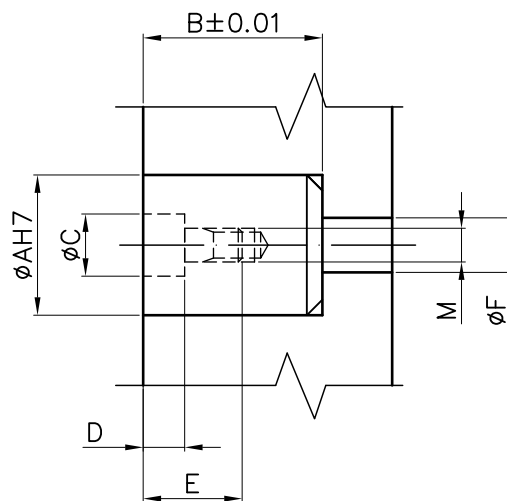
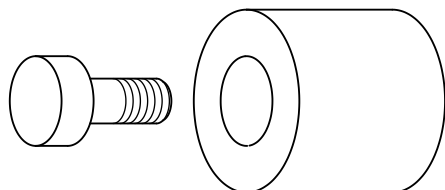


# DATARI A VITE PER PLASTICA E PRESSOFUSIONE

## Date stamps for plastics and die-casting

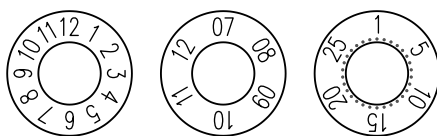
Datari per stampi ad iniezione e pressofusione, costruiti in acciaio 1.2083 rettificati e temperati 48/50 HRC

Date stamps for injection and die-casting moulds, They are completely made in ground and hardened 1.2083 steel with 48/50 HRC



DATARIO				Date stamp
φ6	DMA06	DMF06	DAF06	
φ8	DMA08	DMF08	DAF08	
φ10	DMA10	DMF10	DAF10	DG10
φ12	DMA12	DMF12	DAF12	DG12
φ16	DMA16	DMF16	DAF16	DG16
φ20	DMA20	DMF20	DAF20	DG20

φA	Corpo		Inserto				φF
	B	φC	D	E	M		
φ6	8	3.1	2	8	M1.6x0.2	3	
φ8	10	4.4	2.5	10	M2.3x0.35	4	
φ10	12	5.2	3	12	M2.5x0.35	5	
φ12	14	6.2	3	14	M3x0.35	6	
φ16	14	8.2	3.5	14	M4x0.35	8	
φ20	16	11	4.5	16	M4x0.35	8	



CORPO		Body	
φ6	CM06	CA06	
φ8	CM08	CA08	
φ10	CM10	CA10	CG10
φ12	CM12	CA12	CG12
φ16	CM16	CA16	CG16
φ20	CM20	CA20	CG20



INSERTO		Insert	
φ6	IA06	IF06	
φ8	IA08	IF08	
φ10	IA10	IF10	
φ12	IA12	IF12	
φ16	IA16	IF16	
φ20	IA20	IF20	

Su ordinazione possono essere forniti datari neutri non temperati e versioni speciali  
Neutral untempered date stamps and on request special versions can be supplied