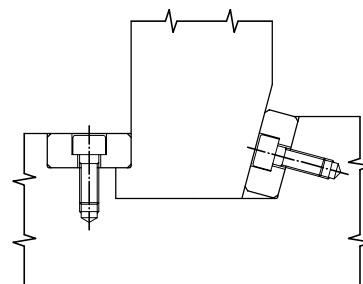
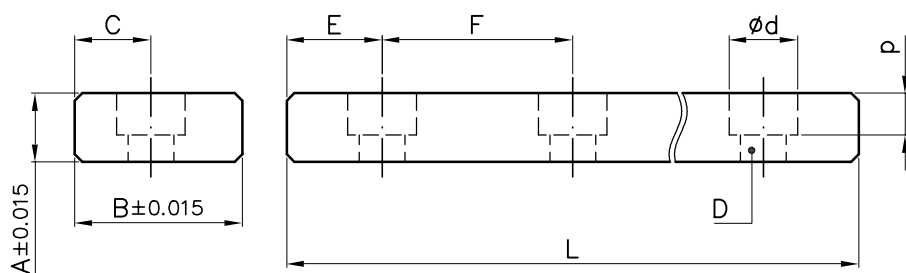


Questi piani e cunei vengono utilizzati nelle piu' svariate soluzioni tecniche di scorrimento. Grazie alla foratura a passo, possono essere tagliati con una normale troncatrice utilizzando anche il piu' piccolo spezzone.

These flat surfaces and wedges are used in the widest variety of technical solutions for runners. Systems to their perfectly pitched perforation, they can be cut with normal shears and even the smallest can be used.

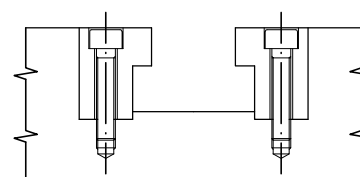
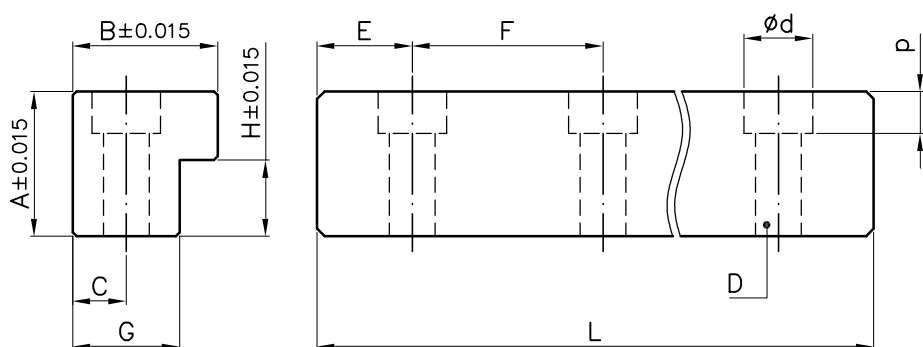
## GP - GUIDA PIANA / Plane guide



DUREZZA 60 HRC

| CODICE<br>Code | A±0.015 | B±0.015 | C   | D  | ød   | P | E    | F  | L   |
|----------------|---------|---------|-----|----|------|---|------|----|-----|
| GP06250        | 6       | 17      | 7.5 | M5 | 9.5  | 4 | 12.5 | 25 | 250 |
| GP06500        | 6       | 17      | 7.5 | M5 | 9.5  | 4 | 12.5 | 25 | 500 |
| GP09250        | 9       | 22      | 10  | M6 | 10.5 | 5 | 12.5 | 25 | 250 |
| GP09500        | 9       | 22      | 10  | M6 | 10.5 | 5 | 12.5 | 25 | 500 |

## GL - GUIDA A "L" / "L" shaped guide



DUREZZA 60 HRC

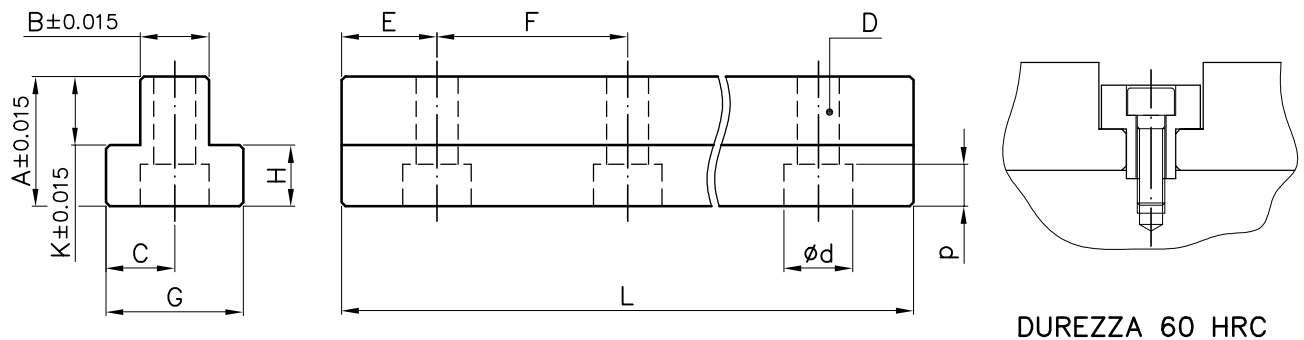
| CODICE<br>Code | A±0.015 | B±0.015 | C | D  | ød   | P   | E    | F  | G  | H±0.015 | L   |
|----------------|---------|---------|---|----|------|-----|------|----|----|---------|-----|
| GL19250        | 19      | 19      | 7 | M6 | 10.5 | 6.5 | 12.5 | 25 | 14 | 10      | 250 |
| GL19500        | 19      | 19      | 7 | M6 | 10.5 | 6.5 | 12.5 | 25 | 14 | 10      | 500 |
| GL24250        | 24      | 19      | 7 | M6 | 10.5 | 6.5 | 12.5 | 25 | 14 | 14      | 250 |
| GL24500        | 24      | 19      | 7 | M6 | 10.5 | 6.5 | 12.5 | 25 | 14 | 14      | 500 |

Rev. 00

Questi piani e cunei vengono utilizzati nelle piu' svariate soluzioni tecniche di scorrimento. Grazie alla foratura a passo, possono essere tagliati con una normale troncatrice per utilizzarne anche il piu' piccolo spezzone.

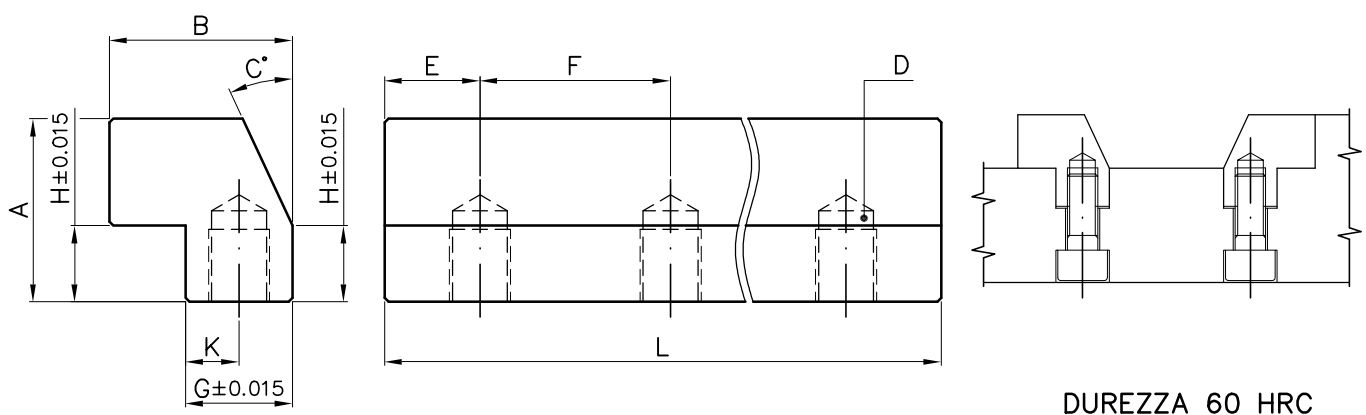
These flat surfaces and wedges are used in the most various technical solutions shifting. Thanks to their perfectly pitched perforation, they can be cut with normal shears in order to use even the smallest crop end.

## GT - GUIDA A "T" / "T" shaped guide



| CODICE<br>Code | A±0.015 | B±0.015 | C   | D  | ød   | P   | E    | F  | G  | H  | K±0.015 | L   |
|----------------|---------|---------|-----|----|------|-----|------|----|----|----|---------|-----|
| GT09250        | 19      | 9       | 9.5 | M5 | 9.5  | 5.5 | 12.5 | 25 | 19 | 9  | 10      | 250 |
| GT09500        | 19      | 9       | 9.5 | M5 | 9.5  | 5.5 | 12.5 | 25 | 19 | 9  | 10      | 500 |
| GT14250        | 24      | 14      | 12  | M6 | 10.5 | 6.5 | 12.5 | 25 | 24 | 10 | 14      | 250 |
| GT14500        | 24      | 14      | 12  | M6 | 10.5 | 6.5 | 12.5 | 25 | 24 | 10 | 14      | 500 |

## GC - CUNEO / Wedge



| CODICE<br>Code | A  | B  | C°  | D   | E    | F  | G±0.015 | H±0.015 | K  | L   |
|----------------|----|----|-----|-----|------|----|---------|---------|----|-----|
| GC24250        | 24 | 24 | 25° | M8  | 12.5 | 25 | 14      | 10      | 7  | 250 |
| GC24500        | 24 | 24 | 25° | M8  | 12.5 | 25 | 14      | 10      | 7  | 500 |
| GC34250        | 34 | 34 | 25° | M10 | 12.5 | 25 | 20      | 12      | 10 | 250 |
| GC34500        | 34 | 34 | 25° | M10 | 12.5 | 25 | 20      | 12      | 10 | 500 |

Rev. 00