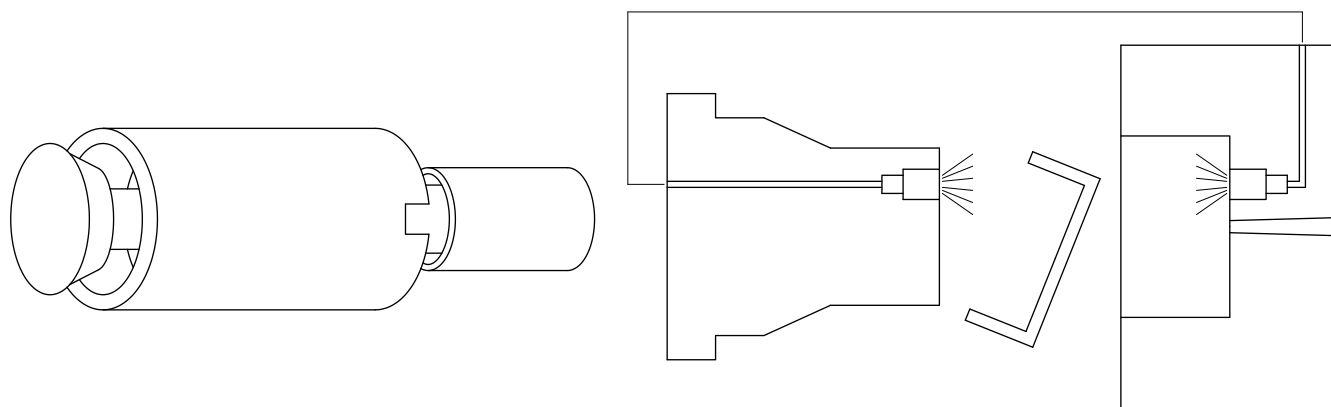
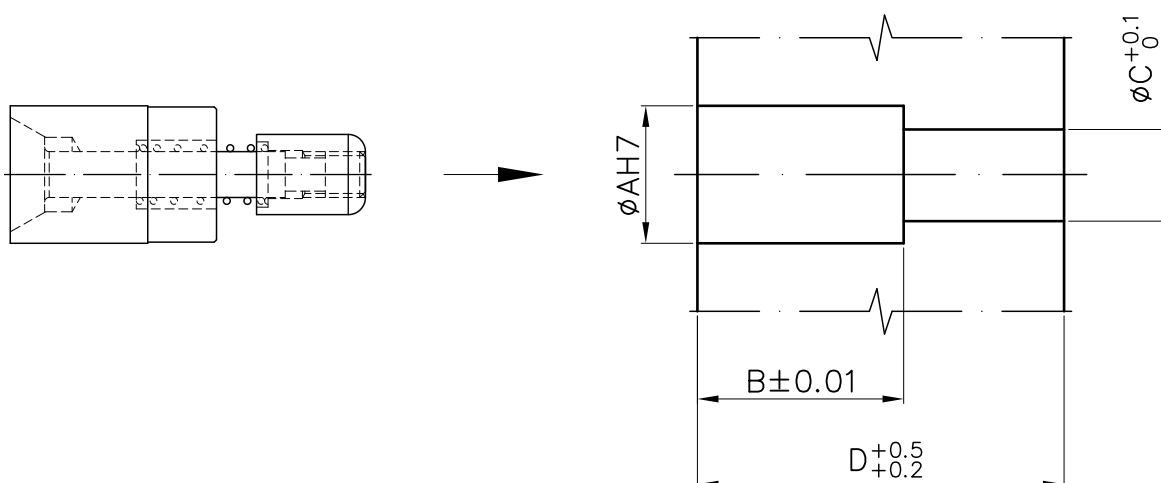


Vengono impiegate per compensare il vuoto durante la fase di estrazione in cavità profonde o per immettere aria. Sono interamente in acciaio 1.2083, rettificate e temperate, con dado autobloccante

These are used to balance air in the vacuum during the extraction phase or to let it into the deep cavities. Completely made in 1.2083 steel, they are ground and hardened and include a self-locking nut.



SEDE DI INSTALLAZIONE
INSTALLATION SEAT



CODICE CODE	$\phi AH7$	$B \pm 0.01$	$\phi C^{+0.1}_0$	$D^{+0.5}_{+0.2}$
VPA08	8	11	6.5	26
VPA10	10	11	6.5	26
VPA12	12	18	8	32
VPA16	16	20	11	40.5
VPA18	18	22	11	40.5
VPA25	25	20	19	57